



STANDARD COLORS



Bronze



Cedar Red



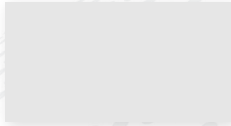
Continental Brown



Desert Sand



Desert Tan



High Gloss White



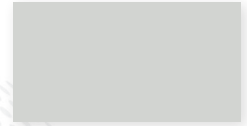
LG (Forest) Green



Light Stone



Sandstone

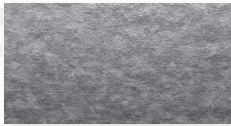


Satin White



Silhouette Gray

SPECIALTY COLORS | TIER 1



AG Galvalume



Colony Green



Evergreen



Fern Green



GS Blue



GS Green



Marine Green



Polar Blue



Royal Blue



Smart Blue



Sunset Orange



Teal



Ultra Marine Blue

SPECIALTY COLORS | TIER 2



Patriot Red



Sierra Sunset



Tangerine



Valentine Red



EXR Wasabi

SPECIALTY COLORS | TIER 3



Apple Lime Cocktail



Dark Teal



Maroon

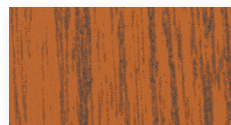


Safety Yellow



UB Yellow

SPECIALTY COLORS | TIER 4



French Oak

Due to variations in computer monitors, these colors are not absolutely accurate.

Please contact **770.562.2850** or **marketing@janusintl.com** for actual steel color samples.

First generation doors used polyester paint, and second generation doors used a siliconized polyester. Now there's a more flexible, longer warranty alternative: Super Durable Polyester (SDP) paint. Only at Janus International.*

SDP paint offers greater flexibility, corrosion resistance and hardness...all important features when you consider the daily wear and tear your steel doors receive.

Our coil coating color selections are available for 26 gauge materials, such as our sheet doors and filler panels and components.

All colors here are stocked and backed by a 40 year film integrity warranty, guaranteed to hold up against peeling, cracking, blistering, flaking, splitting or delaminating. In addition, these colors are guaranteed not to fade or change color for 25 years. Refer to the complete official warranty in this brochure.



JANUS
INTERNATIONAL GROUP

LIMITED PAINT WARRANTY

Janus' complete line of standard stocked color selections consisting of superior Super Durable Polyester coatings, applied to steel for doors, fascias or hallway system-fabricated parts, will meet the following standards from the date of installation:

- Will not peel, crack, blister, flake, split or delaminate (except for such crazing or slight cracking as may occur on tightly roll-formed edges, brake bends, or embossing at the time of forming pre-painted sheet and is accepted as standard and will not constitute a basis for a complaint under this limited warranty) for a period of forty (40) years from the date of application of product to the metal.
- Will not, if such products are identified as Standard Warranty on the Material Specification Sheet, fade or change color in excess of five (5) delta E Hunter units when applied on Vertical Exposure (on clean surfaces after removing dirt, other deposits and chalk per ASTM D 3984) as measured by Hunter Colorimeter D-25 or equivalent calculated in accordance with NCCA Bulletin I-1 (Reference ASTM D1482-57-T) and NCCA Prismatic Color Difference Booklet, Paragraph 3, Page 1, and will not chalk more than eight (8) units, ASTM D 4214-89 Method A, for twenty-five (25) years from date of application.
- Will not, if such products are identified as Standard Warranty on the Material Specification Sheet, fade or change in color in excess of seven (7) delta E Hunter units when applied on Non-Vertical Exposure (on clean surfaces after removing dirt, other deposits and chalk per ASTM D 3984) as measured by Hunter Colorimeter D-25 or equivalent calculated in accordance with NCCA Bulletin I-1 (reference ASTM D1482-57-T) and NCCA Prismatic Color Difference Booklet, Paragraph 3, Page 1, and will not chalk more than six (6) units, ASTM D 4214-89, Method A, for twenty-five (25) years from date of application.
- Will not, if such products are identified as Non-Standard Warranty on the Material Specification Sheet, fade or change in color in excess of V delta E Hunter units when applied on Vertical Exposure and N delta E Hunter units when applied on Non-Vertical Exposure as measured by Hunter Colorimeter D-25 or equivalent calculated in accordance with NCCA Prismatic Color difference booklet, paragraph 3, page 1, for [Y] years from application (the values of V, N, Y shall be communicated to Customer in writing before such a product is manufactured by paint manufacturer) and will not chalk more than C units, ASTM D 4214-89, Method A, for Y years from date of application.

In the event of a complaint, Janus and its vendor shall be given permission to access the product pertaining to the coil coating in question to determine the exact cause of failure. ASTM and NCCA testing procedures will be used.

Should the coil coating fail to comply with this limited warranty, Janus shall transfer the agreed upon liability for compliance to our paint vendor, who at their option, will pay for labor and material reasonably necessary to repaint, repair or replace the building part showing the failure. However, in order for the warranty to be in effect, you, the customer, must notify Janus International Corporation in writing of the failure within thirty (30) days of the discovery of such problem and provide proof of purchase. Should the coil coating vendor repaint, normal painting practice or other suitable alternatives will be used. This warranty applies to the part repainted, repaired or replaced by Janus' coating vendor, but only for the unexpired portion of the warranty period applicable to the original part.

This limited warranty does not apply to circumstances which we do not control, including:

- Fire or other casualty or physical damage;
- Unusual harmful fumes or foreign substances in the atmosphere, standing water or direct salt spray;
- Mishandled products, e.g., any product which has been abused, altered, modified, used in a manner not originally intended, or stored contrary to Janus instructions, including:
 - Damage to the product caused by condensation attributable to improper packaging, handling, shipping, processing, and/or installation;
 - Damage due to failure of the substrate.

This warranty will apply only to metal that is used on property located within the Continental United States, Alaska and Canada.

According to the Door & Access Systems Manufacturers Association (DASMA), "a common occurrence with rolling door products, under normal usage of such products, is the wearing away of the painted surface of the curtain. This condition occurs as the result of the curtain repeatedly coiling upon itself, and then repeatedly uncoiling, upon the opening and closing of a rolling door." Therefore normal wear and tear from metal to metal contact is not covered under the Janus paint warranty.

JanusIntl.com | 866.562.2580



Please contact **770.562.2850** or **marketing@janusintl.com** for actual steel color samples.